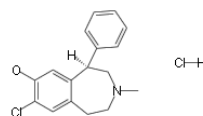


Product Name	: SCH 23390 hydrochloride
Synonyms	: SCH-23390; SCH23390; SCH 23390 hydrochloride
Cat No.	: M17230
CAS Number	: 125941-87-9
Molecular Formula	: C ₁₇ H ₁₉ Cl ₂ NO
Formula Weight	: 324.24
Chemical Name	: (R)-8-chloro-3-methyl-5-phenyl-2,3,4,5-tetrahydro-1H-benzo[d]azepin-7-ol hydrochloride
Description	: SCH-23390 hydrochloride is a potent dopamine receptor antagonist (K _i values are 0.2 nM and 0.3 nM at D1 and D5 receptor sub-types, respectively). SCH-23390 hydrochloride is also an agonist at 5-HT _{1C} and 5-HT _{2C} receptors in vitro (K _i values are 6.3 nM and 9.3 nM respectively). It blocks quinpirole-induced Kir3 (GIRK) currents (EC ₅₀ = 268 nM) independently of receptors.
Pathway	: Autophagy
Target	: LRRK2
Receptor	: D1; D5
Solubility	: DMSO : ≥ 32 mg/mL. 98.69 mM; H ₂ O : < 0.1 mg/mL
SMILES	: OC1=C(Cl)C=C2CCN(C)C[C@H](C3=CC=CC=C3)C2=C1.[H]Cl
Storage	: (-20°C)
Stability	: ≥ 2 years
Reference	:



1. Bourne JA, et al. SCH 23390: the first selective dopamine D1-like receptor antagonist. CNS Drug Rev. 2001 Winter;7(4):399-414.